

Vitraglaze stoneware Rusty Mottle

from more absorbent clays to less

Vitraclay
white
throwing clay



specific gravity 1.38*
850ml water to 1kg

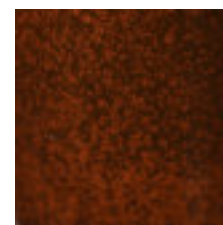
Vitraclay
toasted /studio clay



specific gravity 1.46*
760ml water to 1kg

Vitraclay
school & studio
all purpose, clay

Vitraclay
all purpose with grog



Vitraclay
hand building
crank clay



specific gravity 1.46*
760ml water to 1kg

All samples bisque fired to 999 degrees,

Working notes, Thicker glaze mixes makes the mottling colours larger, thinner they become closer speckled. All are nice so it was hard to decide which was better. This is quite an easy glaze to make work as glaze fit worked across a number of specific gravities. You might notice that the russet parts sink toward the bottom while darker parts remain toward the top.

Please note, This is only for guidance only and would give you a visual starting point as to what water to powder ratio would look like on our Vitraclay bodies. It is important to test with your own pieces, as thickness of the wares and a differing bisque temperatures will have an affect on the absorption. These dipping tests are just made with water, they have no additional binder or ingredient which sometimes is required, for instance if you are using the dipped glaze as a base for other glazes or you are keeping a long term dipping mixture in suspension for reasons of production.